



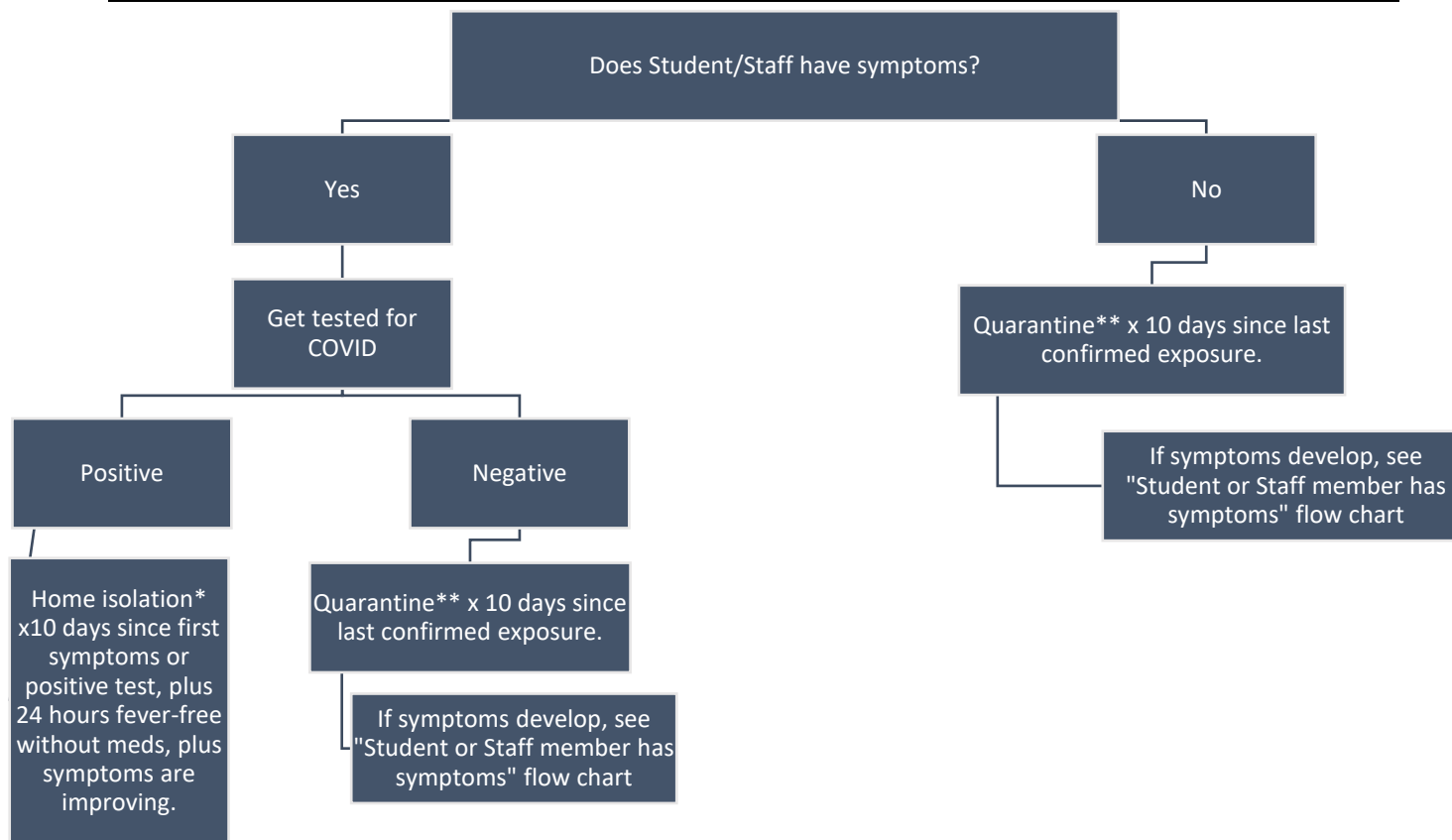
# RIVER VALLEY SCHOOL & STAFF SYMPTOMS AND EXPOSURE PROTOCOL



## STUDENT OR STAFF MEMBER HAVE CONFIRMED EXPOSURE<sup>^</sup>

*A Confirmed Exposure is when a Student/Staff has received confirmation from his/her Primary Care Provider and/or County Health Department.*

Staff should contact Human Resources ([bkrey@rvschools.org](mailto:bkrey@rvschools.org) or 608-459-5847) with questions about protocol.



\*Home isolation instructions: Student/Staff to stay at home for at least 10 days from symptom onset/test collection date until symptoms have improved AND 24 hours fever free without the use of fever reducing medication.

\*\*Quarantine instructions: Student/Staff to stay home for 10 days since last confirmed exposure.

<sup>^</sup>Confirmed Exposure: Student/Staff has received confirmation from his/her Primary Care Provider and/or County Health Department.